

**SCHEMA DI MONTAGGIO/assembling scheme**
**ANTE IN VETRO TEMPERATO SENZA TELAIO**

 tempered glass doors **without frame**

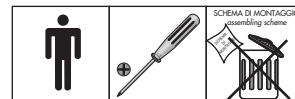
 CODICE  
code **777 700 726**

 DISEGNO  
drawing **SM 18013**

 DATA  
date **23-02-2015**

 PAGINA  
page **1/2**

CODE	COLOUR	CODE	COLOUR	CODE	COLOUR	CODE	COLOUR	CODE	COLOUR	CODE	D1 x D2	COLOUR	CODE	Ø x L	COLOUR
507052019	NICKEL	507060624	NICKEL	507071901	CROMO	508011519	INOX	505202901	NYLON	505203001	4 x 13	NYLON	506111008	4MA x 10	ZINCATO
	nickel		nickel		chrome		inox				1/8" x 1/2" - Nylon			4MA x 3/8" - Zinc Plated	
	U		V5		V6		A5		A6		A7			A8	



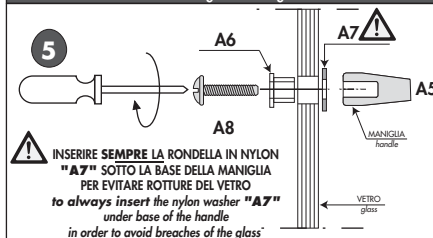
CODE	COLOUR	CODE	COLOUR	CODE	Ø x L	COLOUR	CODE	COLOUR	CODE	COLOUR	CODE	COLOUR
404400419	ARGENTO	404400519	ARGENTO	506940309	3,5 x 15	ZINCATO	505131599	NEUTRO	507123039	ARGENTO	507101909	ZINCATO
	silver		silver		1/8" x 9/16" - Zinc Plated			neutral shade		silver		zinc plated
	S1		S2		S3			S4		B		B2

**GLI ELEMENTI CONTRASSEGNA TI CON \* SONO PRESENTI SOLO SULLE ANTE CON SERRATURA**  
 the elements marked with \* are available on wooden doors with lock only

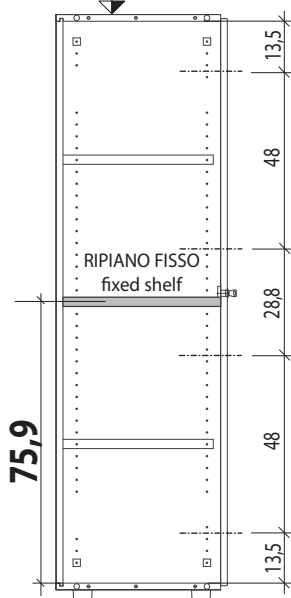
**FASI / phases 1-2-3-4-5-6**
**PARTICOLARE MONTAGGIO MANIGLIA SU ANTE VETRO**  
 detail assembling handle on glass door

**N.B. PER IL MONTAGGIO SEGUIRE LE FASI NUMERATE**  
 assemble following the numbered phases

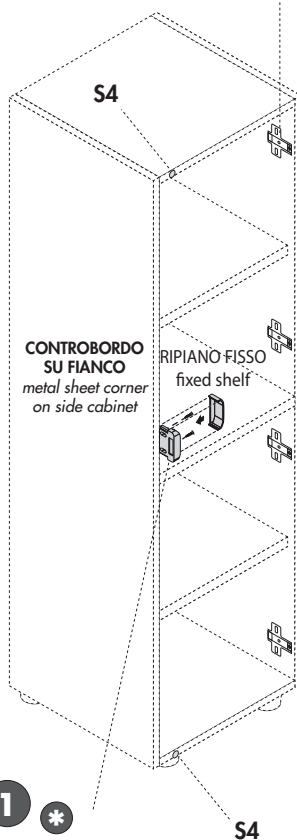
**ANTE VETRO PER MOBILI MEDI O ALTI L.45**  
 glass doors for medium or high cabinets w 45 cms


**2**

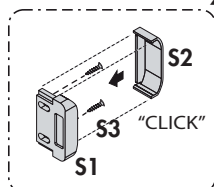
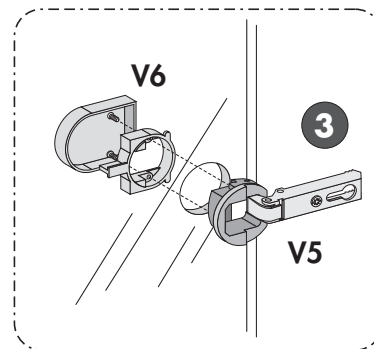
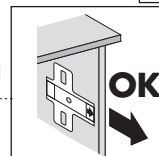
**MONTAGGIO BASETTE PER CERNIERE**  
 base plates for hinges  
**cm 158,3**



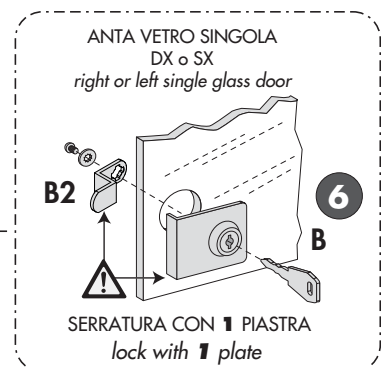
**MEDI MEDIUM**


**1 \***

**UTILIZZO SOLO SU ANTE CON SERRATURA**  
 use on **with lock only**









**2**


**A5+A6+A7+A8 5**











**SEGUE**  
 assembling in the following page

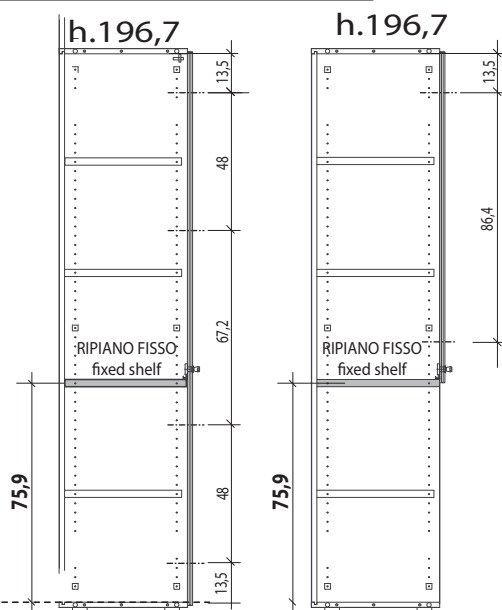


CODE	COLOUR	CODE	COLOUR	CODE	COLOUR	CODE	COLOUR	CODE	D1 x D2	COLOUR	CODE	Ø x L	COLOUR		
507052019	NICKEL	507060624	NICKEL	507071901	CHROMO	508011519	INOX	505202901	NYLON	505203001	4 x 13	NYLON	506111008	4MA x 10	ZINCALTA
nickel		nickel		chrome		inox				1/8" x 1/2" - Nylon		4MA x 3/8" - Zinc Plated			
															
U		V5		V6		A5		A6		A7		A8			

**N.B. PER IL MONTAGGIO  
SEGUIRE LE FASI NUMERATE**  
*assemble following the numbered phases*

CODE	COLOUR	CODE	COLOUR	CODE	Ø x L	COLOUR	CODE	COLOUR	CODE	COLOUR	CODE	COLOUR
404400419	ARGENTO	404400519	ARGENTO	506940309	3,5 x 15	ZINCATO	505131599	NEUTRO	507123039	ARGENTO	507101909	ZINCATO
	silver		silver		1/8" x 9/16" - Zinc Plated			neutral shade		silver		zinc plated
	<b>S1</b>		<b>S2</b>		<b>S3</b>		<b>S4</b>			<b>B</b>		<b>B2</b>

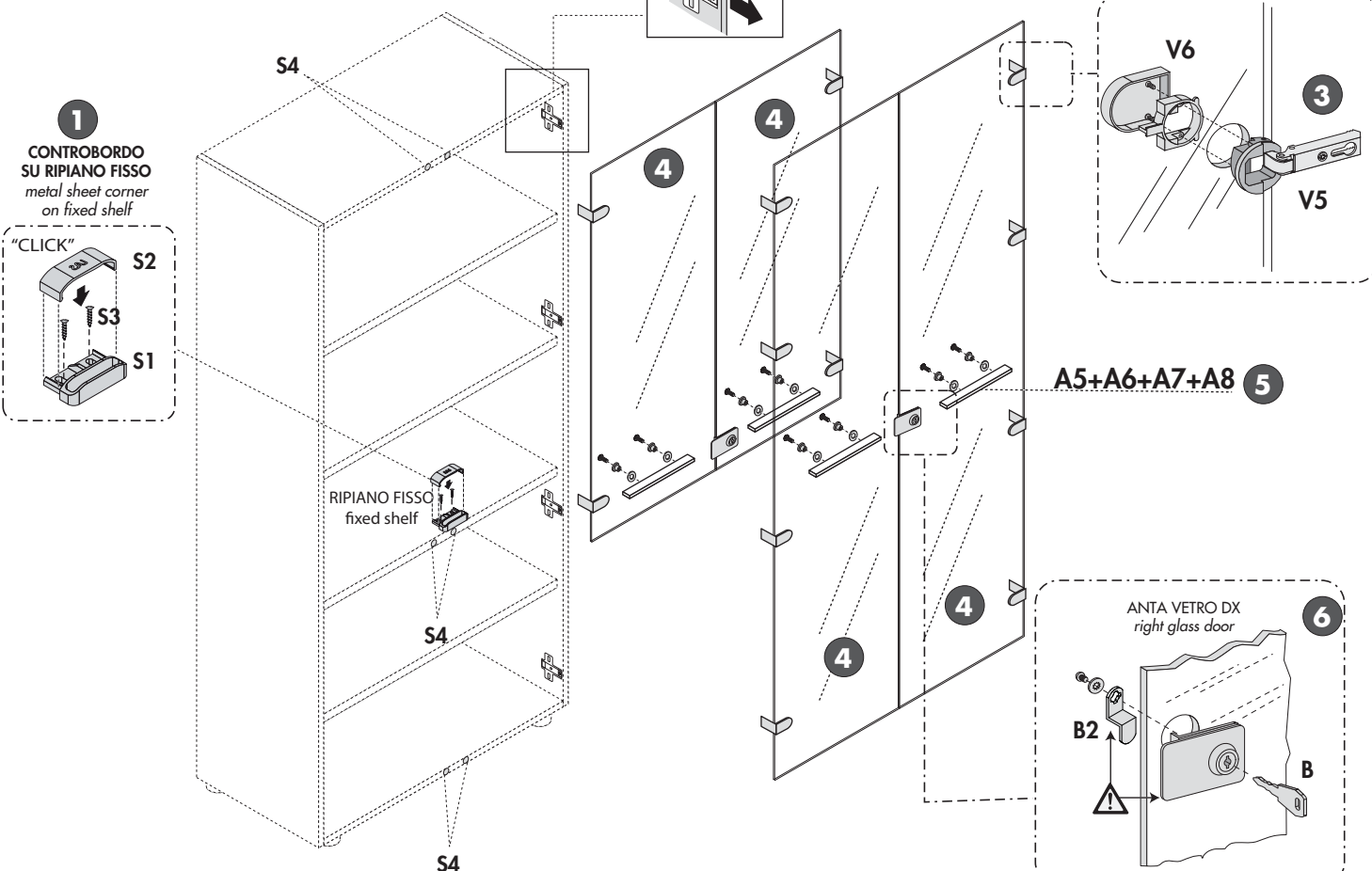
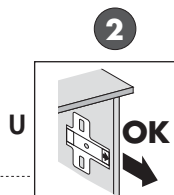
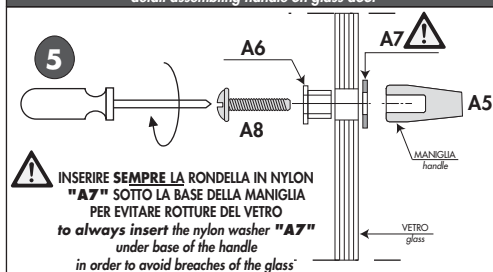
**GLI ELEMENTI CONTRASSEGNA TI CON **  
**SONO PRESENTI SOLO**  
**SULLE ANTE CON SERRATURA**  
*the elements marked with *  
*are available on wooden doors with lock only*

**FASI / phases 1-2-3-4-5-6**

## 2 MONTAGGIO BASETTE PER CERNIERE base plates for hinges

**ANTE VETRO**  
**PER MOBILI MEDI O ALTI L.90**  
*glass doors for medium or high cabinets w 90 cms*

**PARTICOLARE MONTAGGIO MANIGLIA SU ANTE VETRO**  
*detail assembling handle on glass door*



SERRATURA CON **2** PIASTRE  
lock with **2** plates