

A

Categoria
Category

PLANET
Resistenza alla fiamma - Fire resistance
Certificato Classe 1 UNI 9175 CL. 1 IM
87,5% P.V.C. plastificato - 12,5% cotone
(Martindale 70.000)



A 31 F



A 32 F



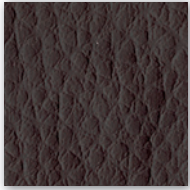
A 39 F



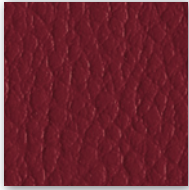
A 35 F



A 34 F



A 38 F



A 36 F



A 33 F



A 27 F

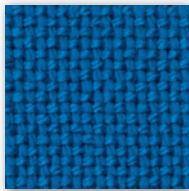
B

Categoria
Category

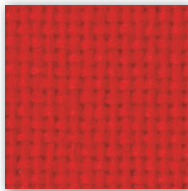
Tessuto altamente ignifugo
Certificato Classe 1 Ministero dell'Interno
Fireproof fabric - Tissu non feu
Brandfester Bezug - Tela ignifuga
100% MA - FRS acrilico
(Martindale 55.000)



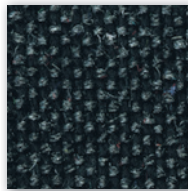
B 251



B 264



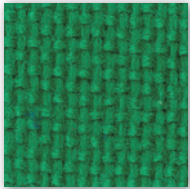
B 259



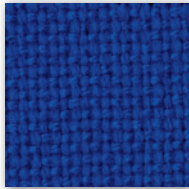
B 267



B 266 (Dark brown)



B 262



B 263



B 265



B 254

C

Categoria
Category

SKILL
Resistenza alla fiamma - Fire resistance
Certificato Classe 1 UNI 9175 CL. 1IM - EN 1021 - BS 5852
69% P.V.C. plastificato - 30% cotone - 1% poliuretano
(Martindale 50.000)



SKILL



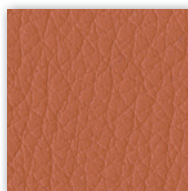
C 40 F



C 41 F



C 42 F



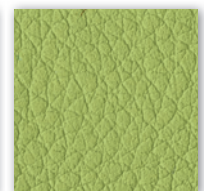
C 43 F



C 44 F



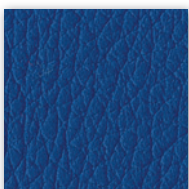
C 45 F



C 46 F



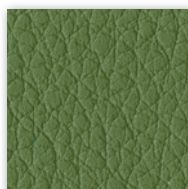
C 47 F



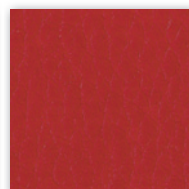
C 48 F



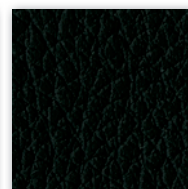
C 49 F



C 50 F



C 51 F



C 52 F

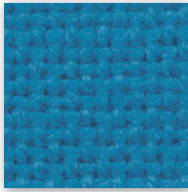


Categoria
Category

TREVI Tessuto altamente ignifugo
Certificato Classe 1 Ministero dell'Interno
Fireproof fabric - Tissu non feu
Brandfester Bezug - Tela ignifuga
100% Poliestere Trevira CS
(Martindale 120.000)



C 321



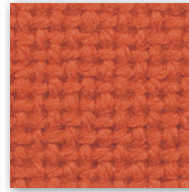
C 314



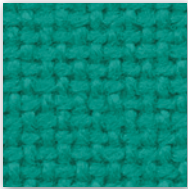
C 300



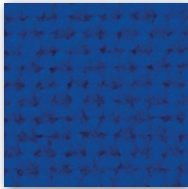
C 311



C 323



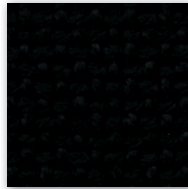
C 306



C 319



C 316

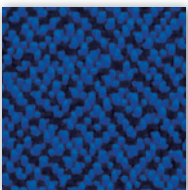


C 310

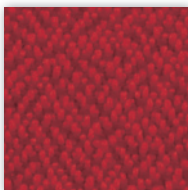


Categoria
Category

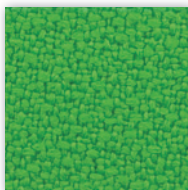
Tessuto altamente ignifugo
Certificato Classe 1 Ministero dell'Interno
Fireproof fabric - Tissu non feu
Brandfester Bezug - Tela ignifuga
100% Poliestere Trevira CS
(Martindale 100.000)



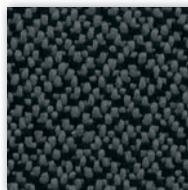
C 360



C 361



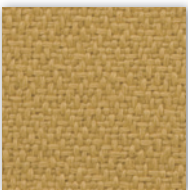
C 359



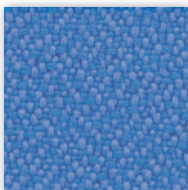
C 363



C 364



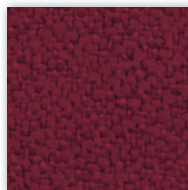
C 366



C 367



C 368



C 369

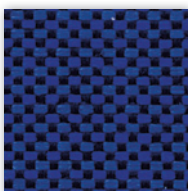


Categoria
Category

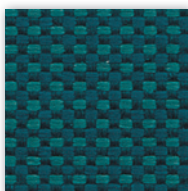
Tessuto altamente ignifugo
Certificato Classe 1 Ministero dell'Interno
Fireproof fabric - Tissu non feu
Brandfester Bezug - Tela ignifuga
100% Poliestere Trevira CS
(Martindale 55.000)



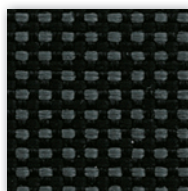
C 396



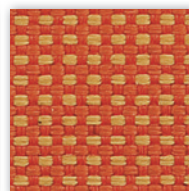
C 397



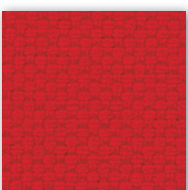
C 398



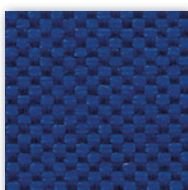
C 399



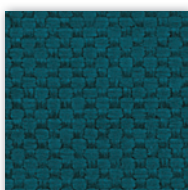
C 395



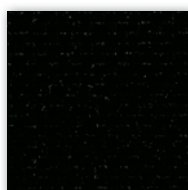
C 390



C 391



C 392



C 393

C

Categoria
Category

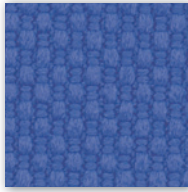
TREVI Tessuto altamente ignifugo
Certificato Classe 1 Ministero dell'Interno
Fireproof fabric - Tissu non feu
Brandfester Bezug - Tela ignifuga
100% Poliestere Trevira CS
(Martindale 70.000)



C 381



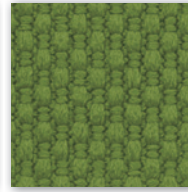
C 38 T



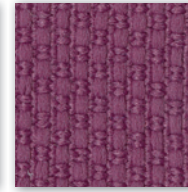
C 383



C 380



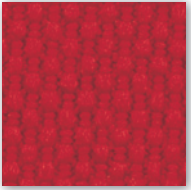
C 385



C 38 L



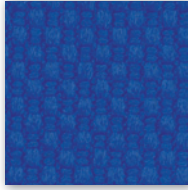
C 38 H



C 382



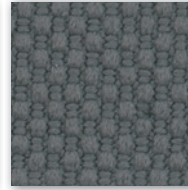
C 386



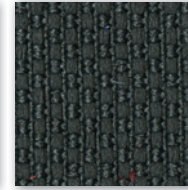
C 387



C-38



C 384



C 38 A



C 388

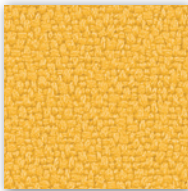
C

Categoria
Category

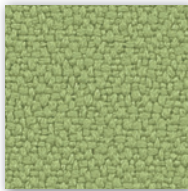
Tessuto altamente ignifugo
Certificato Classe 1 Ministero dell'Interno
Fireproof fabric - Tissu non feu
Brandfester Bezug - Tela ignifuga
100% Xtreme FR®
(Martindale 100.000)



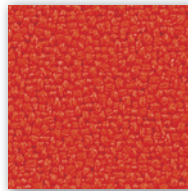
C 335



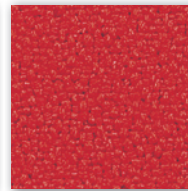
C 336



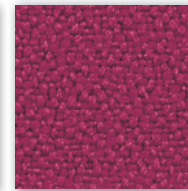
C 332



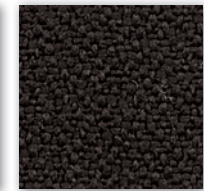
C 334



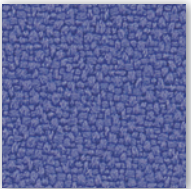
C 329



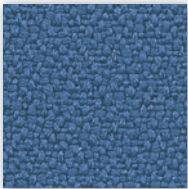
C 337



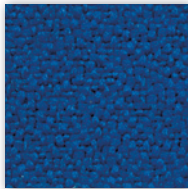
C 327 (Dark brown)



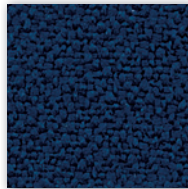
C 339



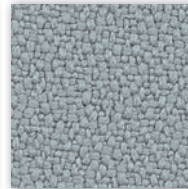
C 325



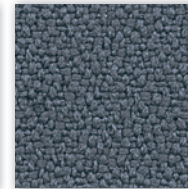
C 326



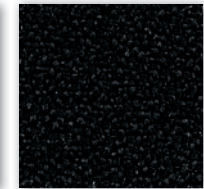
C 330



C 331



C 324

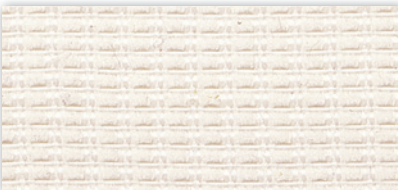


C 328

D

Categoria
Category

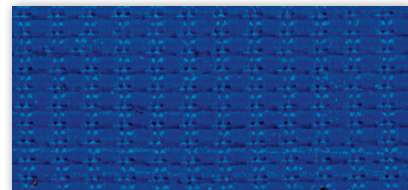
Rete - Mesh - Resille - Membran - Red
64% PL - 36% PA - Martindale 100.000



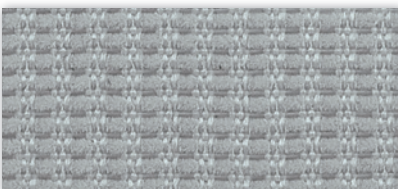
D 218



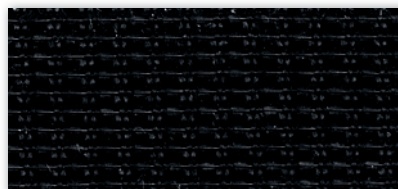
D 219



D 220



D 221



D 222

D

Categoria
Category

Trattamento antimicrobico - Antimicrobial treatment
Resistenza alla fiamma - Fire resistance
UNI 9175 CL. 1IM - EN 1021-2 - BS 5852-1 part I
63% Poliuretano - 29% Cotone - 8% PES
63% Polyurethane - 29% Cotton - 8% PES
(Martindale 150.000)


EXTREMA/AU
Ultra-Fresh*



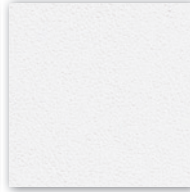
D 420



D 426



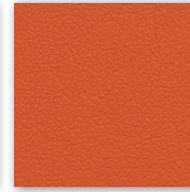
D 430



D 427



D 431



D 421



D 423



D 432



D 422



D 425



D 428 (Dark brown)



D 424

D

Categoria
Category

Resistenza alla fiamma - Fire resistance
UNI 9177 CL. 1 - UNI 9175 CL. 1IM - EN 1021-2
100% PES
(Martindale 60.000)

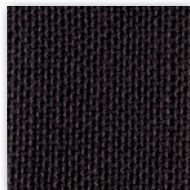

ESEDRA



D 450



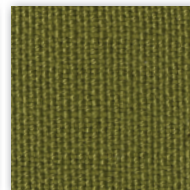
D 451



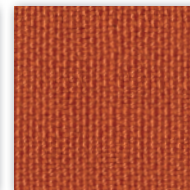
D 452



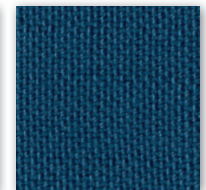
D 453



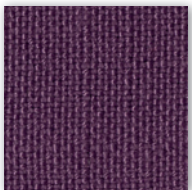
D 454



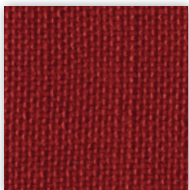
D 455



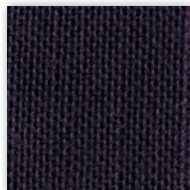
D 456



D 457



D 458



D 459



D 460



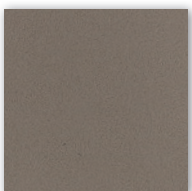
D 461

D

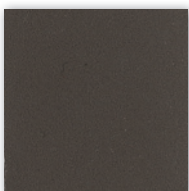
Categoria
Category

Trattamento fungicida - Resistance to mould and bacteria
Impermeabilità - Waterproof
Resistenza alla fiamma - Fire resistance
UNI 9175 CL. 1IM - EN 1021-2 - BS 5852-1 part I
63% Poliuretano - 29% Cotone - 8% PES
63% Polyurethane - 29% Cotton - 8% PES
(Martindale 150.000)

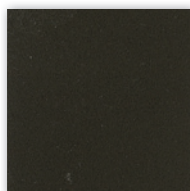

EXTREMA IKON
Ultra-Fresh*



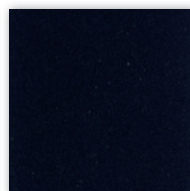
D 470



D 471



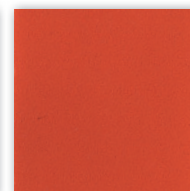
D 472



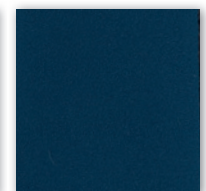
D 473



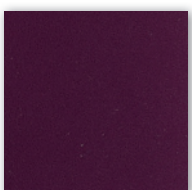
D 474



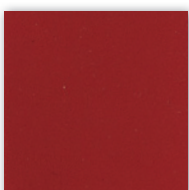
D 475



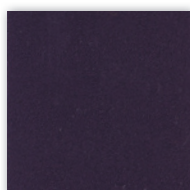
D 476



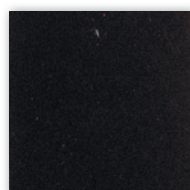
D 477



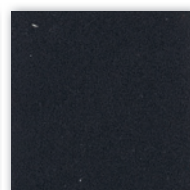
D 478



D 479



D 480



D 481

D

Categoria
Category

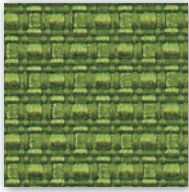
Tessuto altamente ignifugo
Certificato Classe 1 Ministero dell'Interno
Fireproof fabric - Tissu non feu
Brandfester Bezug - Tela ignifuga
100% Poliestere Trevira CS
(Martindale 110.000)



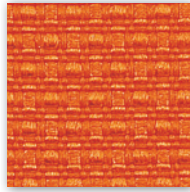
TREVIRA
CS



D 440



D 441



D 442



D 443



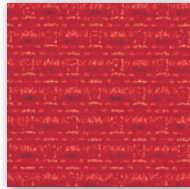
D 444



D 445



D 446



D 447



D 448

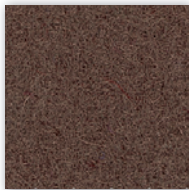
P

Categoria
Category

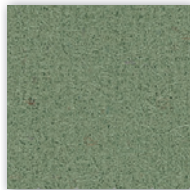
DIVINA 3
100% Lana vergine-New wool
Resistenza alla fiamma - Fire resistance
Certificato classe 1 UNI 9175 1IM - EN 1021-1/2 - BS 5852
(Martindale ~ 45.000)



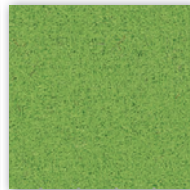
PK 951 (Divina 224)



PK 952 (Divina 356)



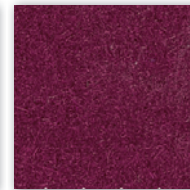
PK 953 (Divina 856)



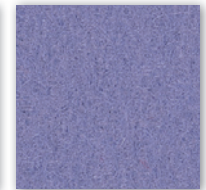
PK 954 (Divina 956)



PK 955 (Divina 623)



PK 956 (Divina 652)



PK 950 (Divina 676)



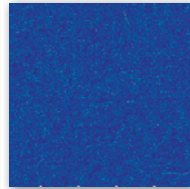
PK 957 (Divina 666)



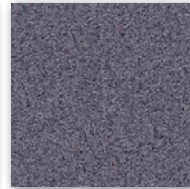
PK 958 (Divina 696)



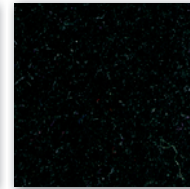
PK 959 (Divina 742)



PK 960 (Divina 756)



PK 961 (Divina 154)



PK 962 (Divina 191)

P

Categoria
Category

Vera pelle - Genuine leather
Cuir - Leder - Piel auténtica
A richiesta disponibili altri colori.
By request any other colours available.



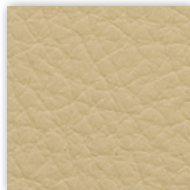
VERA
PELLE



P 901



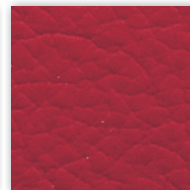
P 915



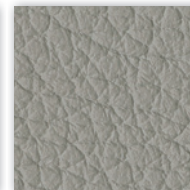
P 916



P 917



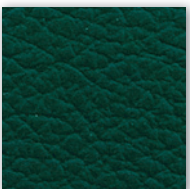
P 909



P 905



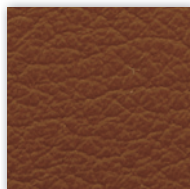
P 911



P 910



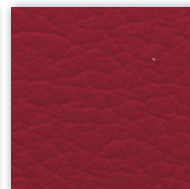
P 912



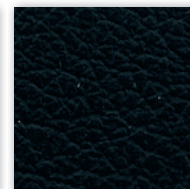
P 908



P 902 (Dark brown)



P 914



P 903

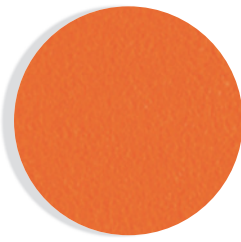
KICCA
KALEA

Colori polipropilene
Polypropylene colours



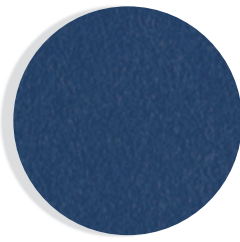
C

Crema
Cream
Crème
Creme
Crema



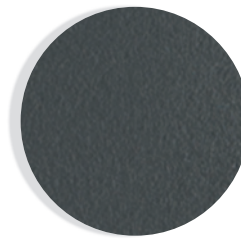
A

Arancio
Orange
Orange
Orange
Naranja



B

Blu
Blue
Bleu
Blau
Azul



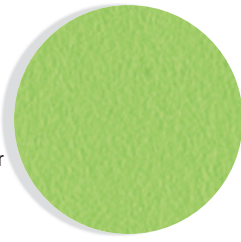
G

Grigio
Grey
Gris
Grau
Gris



T

Tortora
Dove-colour
Tourterelle
Taube
Arena



V

Verde
Green
Vert
Grün
Verde



R

Rosso
Red
Rouge
Rot
Rojo



N

Nero
Black
Noir
Schwarz
Negro

KRIZIA

Colori policarbonato
Polycarbonate colours

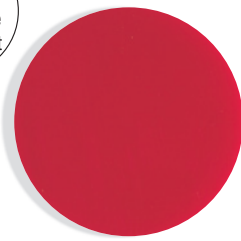
KYOS

Colori polipropilene
Polypropylene colours



B

Bianco
White
Blanc
Weiss
Blanco



R

Rosso
Red
Rouge
Rot
Rojo



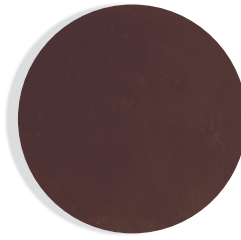
N

Nero
Black
Noir
Schwarz
Negro



B

Bianco
White
Blanc
Weiss
Blanco



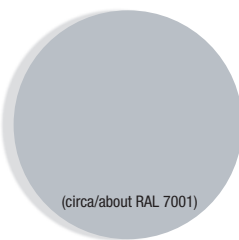
M

Moka



N

Nero
Black
Noir
Schwarz
Negro



G

Grigio
Grey
Gris
Grau
Gris

(circa/about RAL 7001)

KENSHO
KAPIO

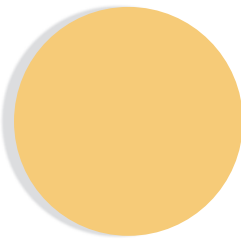
Colori piani-basi
Tops-bases colours

KIMBOX



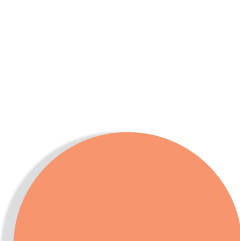
B

Bianco
White
Blanc
Weiss
Blanco



G

Giallo
Yellow
Jaune
Gelb
Amarillo

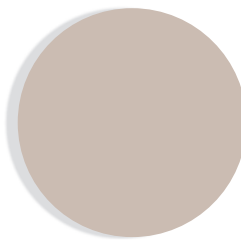


A

Arancio
Orange
Orange
Orange
Naranja

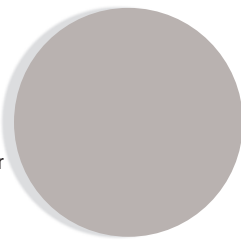


Rovere
Oak
Rouvre
Eichenholz
Roble



T

Tortora
Dove-colour
Tourterelle
Taube
Arena



L

Lava



Faggio bianco
White beechwood
Hêtre blanc
Buchenholz weiss
Haya blanca



T80
T81